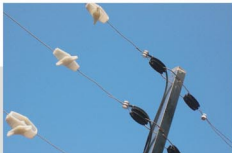


Electric fencing solution



Professional Makes Perfect

Tel :+86 755 21502786

Email: jason@tonghertech.com
tonghersales@gmail.com

Skype:generalliwenzhong

Office Add:Room C904,Tianhui Building,Yousong Rd, Longhua street,
Longhua District, Shenzhen City,China

Factory Add :3/F,8 block,Lijincheng industrial park,East Rd of industry
longhua street,Bao an District, shenzhen,China

 CE ISO 9001:2008
NO:04110020095R0S

Since 2002





Electric fence energizer

Perimeter security single zone electric fence energizer,generates high voltage pulse of 5KV~15KV to intruders touching the fence,which establishes a physical and psychological barrier to prevent invasion.

Feature:

1. Differential voltage output technology: every wire has voltage, have the differential voltage between the two adjacent wires.
2. LCD or LED indicate the working state and the voltage on every wire of fence.
3. High / low voltage switch manually, long-distance equipment auto switch function.
4. Short circuit, break and tamper alarm, self-inspection system for equipment fault
5. Waterproof casing and downward appearance design leading the industry development.
6. RS 485 bus control, keypad, computer, network and multiple long distance management solution.
7. DC12V, NC/NO dry contact alarm output, can conjunct with other modern security products.
8. Set up alarm delaying triggered time freely



LX-2008SC



LX-2008SE

Output parameter:

1. Output peak voltage: 5KV~10KV
2. Output low voltage: 700~1000V
3. Peak current of pulse: <10A
4. Pulse duration: <0.1s
5. Pulse interval time: 1s
6. Max quantity of electricity of pulse: 2.5mC
7. Max energy of pulse: <5.0J



LX-2008HC



LX-2008HE

Output parameter:

1. One for: ultra high voltage output
2. Output peak voltage: 5KV~15KV
3. Output low voltage: 700~1000V
4. Peak current of pulse: <10A
5. Pulse duration: <0.1s
6. Pulse interval time: 1s
7. Max quantity of electricity of pulse: 2.5mC
8. Max energy of pulse: <5.0J



LX-2008A4J

Feature

1. Back up lithium battery(not included)
2. Wireless remote control
3. Waterproof casing
4. Embedded terminal connector
5. Large LCD display
6. On board alarm information query
7. On board working status setting
8. Output voltage 5kv - 15kv
9. Max output energy : 5 J



**Solar
energy saving**

**wireless
easiness**



LX-2008SS

Electrical characteristics

Power supply : DC12V(Power by Adapter(AC110-240 V to DC12V), solar panel(>12V), battery(DV12V))

Control : Wireless remote control

Alarm :DC12V alarm output, connect to siren.

System power consumption : <10 Watt

Operating environment Temperature : -40 to +55℃

Relative humidity : ≤95%

Output parameter:

Output peak voltage: 8KV~14KV

Peak current of pulse: <10A

Pulse duration: ≤0.1s

Pulse interval time: 1s

Max energy of pulse: < 3.0J

Package details

Dimension: 410×320×220 (mm)

Net Weight: 4.2kg

Color: Blue

Packaging Details: Carton package



Post

Made of aluminium alloy pipe.

- Terminal Post :
Φ32×1.5mm*870mm
- L shape terminal post:
Φ32×1.5*850mm, with angle 135 degree, 260mm and 590mm
- Middle pull post :
Φ21*1.5*850mm
- L shape middle pull post:
Φ21*1.5*850mm, with angle 135 degree, 260mm and 590mm

Insulator

ABS material

- Terminal rod insulator :
integrated Terminal rod insulator and fixed clip and tensioner, work with round aluminium alloy pipe terminal rod
- Pull rod insulator :
Φ21*1.5*850mm, with angle 135 degree, 260mm and 590mm .blue or gray optional





Middle pull post(LX-CGF)
Middle pull post (rod). Made of fiberglass fence stake is made of fiberglass Which holds the wire of the electric fence

1. Keep the space of fence wire
2. Made of fiberglass Tensional and comoving proof, water proof
3. Provide enough tension for electric fence and terminal post
4. Installed on every 4-6 meters



Terminal post(LX-DGG)
Terminal post(terminal rod) installs on the two end, the corner angle less than 120 degree the electric fence, which holds the pressure and tension from the electric wire

1. Made of stainless steel, more durable
2. Installed every 50-100 meters, the corner, the end of fence
3. Anti-comosue
4. Standard length of 85°/380°/380°15mm, custom-made any length



Terminal post insulator(LX-DJ)
Terminal post insulator is widely installed on terminal posts, connecting terminal post and electric wire by fixing

1. High voltage resistant of 19KV
2. Anti-oxidation, corrosion resistance and anti-static
3. Made of ABS material, more durable



Middle pull rod insulator(LX-CJ)
This insulator is used to hold the wire and reduce the pressure of middle pull post or line posts using latch(pin) to fix the insulator

Easy installation

1. High voltage resistant > 15kv
2. Anti-oxidation, Anti-static
3. Corrosion resistance
4. Easy installation



Wire tensioner(LX-J)
Electric fence wire tensioner, penetrated with the alloy wire, available in changing the tension of the alloy wire

1. Compound material
2. Installed on every alloy wire of terminal post
3. Anti corrosion and anti-oxidation



Wire-wire linker(LX-X)
Wire linker(wire connector), is used in connection between high voltage wire and alloy wire, fixed on the terminal posts

1. Aluminum made, anti-oxidation
2. Easy to install, light weight
3. Double threaded, prevent from loose of the wire



Post fixation(LX-ZD)
Fixation for electric fence security system middle posts, and middle pull posts, which can fix the posts on floor and wall

1. Anti corrosion and high tensile
2. Stainless steel made
3. Fix the posts and universal pedestal



Universal pedestal(LX-DZ)

Universal pedestal, applicable in holding terminal post, middle pull post on the wall in perimeter security system.

1. Made of stainless steel
2. Fastening terminal posts, middle pull posts, and middle posts
3. Rust proof and high tension
4. Installed every 22.5 degree, angle adjustable

Terminal post fixing clip(LX-DC)

Description: The fixing clip generates the terminal post insulator and is fixed on terminal post or U groove, connecting the terminal post and insulator

Feature:

1. Made of stainless steel, more durable
2. Rust proof



Voltmeter(LX-CLB)
Easily detect the voltage on electric fence or voltage between earth and electric fence, and show the value on the LCD screen.

1. Voltage range detected from 1000 to 10,000 volts
2. Low consumption, power saved
3. Automatic off/on, Replaceable 9v battery



Lightning arrester(LX-HYSWS)
Protecting the fence energizer from lightning strikes(thunder) on the fence perimeter.

This lightning arrester creates a path of least resistance, diverting lightning surges to the ground

Must separate with energizer grounding system with more than 10 meters distance



Gate Connector(LX-GC)
Used for sliding gate.

Made of plastic-steel and stainless steel, suitable for outdoor use

Luminated/Warning sign(LX-JS)

Warning sign should be hung on the electric fence to indicate there is electric shock on the fence and give a psychological barrier to intruders. Luminated warning sign can be seen during the night with double printed black letters.

1. Large black letters on both sides
2. Indicate electric shock with picture and words
3. Installed every 10 meters on the fence
4. Luminate 10 hours of absorbing light for 10 minutes.



Siren(Audible and visual alarm)(B0478)

High bright
High transparency
Fadeless
Low noise



Siren(speaker)

Description: Siren is being used very widely in perimeter security system, especially in electric fence security system. It will release a loud noise to indicate intruders for admin to know where invasion happens

Working voltage: DC12V



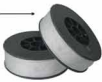
Energizer Protective Housing(LX-FHX)

435*350*150mm fan or temperature switch optional. Made of metal



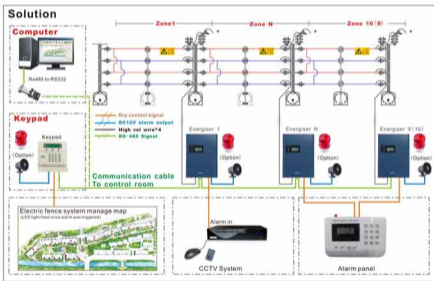
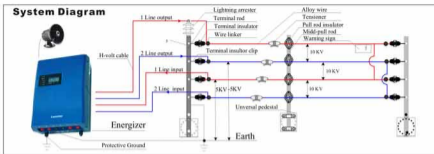
Alloy wire(Φ1.8/2.0/2.5mm)
Electric fence alloy wire, specially made wire for electric fence security system, conducting electricity from the energizer to perimeter. The maximum tension is about 600N, preventing continuous electric shock

1. Good conducting, low impedance
2. High elastic, oxidation resistant, anti corrosion
3. Three dimension: 1.8mm, 2.0mm, 2.5mm



High voltage cable(LX-ZC)
Double insulated high voltage cable, is used to connect the energizer and terminal post to conduct the electric shock

1. Double insulated, resistant of 20KV high voltage pulse
2. 2.5 square millimeter aluminum conductor



Electric fence keypad controller

Description:
Keypad controller for electric fence security system, controlling up to 16 zones at the same time. It can set up and cancel the defence zones immediately instead of setting up every energizer.

- Feature:
1. Password logging and password modifying function
 2. Control 1-16 zones of electric fence energizer by RS485 bus
 3. After zone numbers (ID) of electric fence energizer
 4. Alarming zones, types/short circuit and break, time record function
 5. DC12V alarm signal output (LX-M8J only)



LX-M8J



LX-M4J



Community



Warehouse



Industrial park



Power station



Villa



Prison



Factory



Communication base

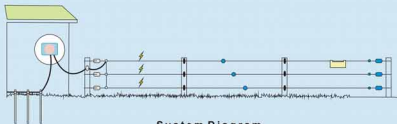


Animal fencing energizer

LX-Polar II Electric Fence Energiser

Generating the electric shock to the fence wire. Meets the needs of all animal management or protection and rotational crop grazing requirement. It is easy to install and the power options include AC(110v-240v) mains power, 12 volt (v) deep cycle lead-acid/gel battery or in conjunction with a (10-65 watt) solar panel, making this a suitable system for larger scale settings where mains power is either unavailable or impractical. As a combination, fixed or portable system, the Electric Fence

Energiser provides flexibility with pasture management and is the ideal solution for short or long-term animal control or rotational crop grazing.



System Diagram

Main features include:

1. Large terminals that make it easy to connect for best performance
2. Powered by:
 - a) AC mains power or
 - b) 12v deep cycle lead-acid/gel battery (not included)
 - c) 40w solar panel (not included) in conjunction with a 12v battery
3. 6 operating modes including a cost-effective daylighting power save
4. 2 different pulse intervals of 1.5 seconds and 2.5 seconds (switchable)
5. LCD/LED display shows the pulse voltage and status of the fence and battery
6. Waterproof and dustproof



LX-Polar 2



LX-Polar 5



LX-Polar S1



LX-Polar S2



LX-Polar S5

Fence energizer

Model : LX-polar I (S1)

Performance Characteristics

1. Working distance of single wire fence is up to 5,000m (theoretical value)
2. Stored energy: 1.5 joules
3. Max Output energy: 1.0 joules

Fence energizer

Model : LX-polar II (S2)

Performance Characteristics

1. Working distance of single wire fence is up to 20,000 (theoretical value)
2. Stored energy: 2.7 joules
3. Max Output energy: 2.0 joules
4. Consumption: 3.5W

Fence energizer

Model : LX-polar 5 (S5)

Performance Characteristics

1. Working distance of single wire fence is up to 30,000 (theoretical value)
2. Stored energy: 5.8 joules
3. Max Output energy: 5.0 joules
4. Consumption: 5.5W

Tread in post

Tread in post Posts have a solid cuspidal "T" pin for rigidity and an extended, reinforced high-tensile steel spike to push into the ground with your foot and has eight molded clips to hold fence wire or rope or tape

1. Convenience for installation and dismantling
2. Light weight and waterproof, anti-corrosion
3. Cost effective
4. Suits for temporary fence

Gate Handle(LX-GH)

Make a fast and effective gateway for electric fencing, easy access to the fenced off paddock which allows opening without grounds contact, made of UV plastic insulated clip and galvanized high tension spring

1. Insulated grip with UV stabilised plastic
2. Connect the spring and insulator to build up a gate
3. Customised, non-rusting hook
4. Insulated handle for safety

Terminal Insulator(LX-TI)

Terminal posts or corner posts terminal insulator, installed on terminal posts, connecting terminal post and alloy wire, grooves to prevent twisting and strand tension

1. Resist 15KV high voltage
2. Made of ABS, cost effective
3. Withstand the tensile from the electric fence wire

Inline Strainer(ratchet tensioners)

LX-IS used in farm livestock electric fence system, used in one end of the fence wire, to tension the polywire or polytape poly rope

1. Can be tightened with a square screwdriver
2. Easily control the length of electric fence wire
3. Cost effective with good quality
4. Insulated

Double Hook Insulator(LX-DHB)

Description: insulator used in gate handle, one loop holds the fence while the other holds the gate handle

Feature:
Used with Any Gate Handle
Attached to post by screw nut
Used with any gate handle
Tapping thread, easily to install

Polywire(LX-PW(box))

Visible and safe polywire conducting electricity from the energiser, contain 3-bit stainless steel conductors for greater strength and conductivity, multiple diameter and color for your difference application, temporary fencing or permanence fencing. Easy to install, re-wind and re-use, more cost effective and light weight

1. Diameter: 2.0 to 6.0mm
2. Easy to install, re-wind and re-use
3. Can be used for temporary grazing, strip or rotational grazing and pet control
4. Visible and safer than traditional metal wire

Gate Spring(LX-GS)

Electric fencing gate spring, galvanized, extending up to 5 meters without overstretching

Complete with the gate handle to be an extremely visible and highly effective gate

Complete with double hoop insulator

1. Made of galvanized
2. Extendable up to 5 meters
3. Easy to install

Ring Insulator(LX-RIT)

Insulator screw in ring (self tapping screw/tapping screw), simply screw into soft wood to prevent electrical shorts between the electrified wire and the fence posts

Keep the space between wires and posts

1. Has an angled slot/clips that ensures wire retention
2. Work with wire and polyrope
3. Suitable for all steel and portable wire products
4. Extremely versatile and useful insulator

Double hook Insulator(LX-DHIT)

Insulator used in gate handle, one loop holds the fence while the other holds the gate handle

Used with Any Gate Handle
Attached to post by (self tapping) screws
Used with any gate handle
Tapping thread, easily to install

Ring Insulator(bolt)(LX-RIB)

Ring insulator with Rope, Suitable for Twine or Permanent Wire

Easy to use with rope and wire

Suitable for twine or permanent wire

Simply screw into wooden post or normal screw (plug) insertion to attached concrete or brick wall or metal post with existing holes

Feature:
1. Has an angled slot/clips that ensures wire retention
- 2. Work with wire and polyrope
- 3. Suitable for all steel and portable wire products
- 4. Extremely versatile and useful insulator

warning signs (LX-ZJS)

Warning sign is used to hang on the electric fence to indicate electric shock to people.

Feature:
1. large black letters printed on both sides
- 2. 200x100mm, light weight

Voltmeter(LX-CLB)

Easily detect the voltage on electric fence or voltage between earth and electric fence and show the value on the LCD screen.

1. Display the voltage with number on LCD screen
2. Easily and effectively detect voltage between two different points
3. Voltage range detected from 1000 to 10,000 voltage
4. Low consumption, power saved
5. Automatic off/on, Replaceable 9v battery

Rod Post Insulator(LX-RPI)

Three tap position Adjustable to fit posts 6mm to 20mm in diameter

Use with all fence wire and polyrope keep the distance within the electric fence wires

Material: PE

Can work with various side posts

Hand up wire/tape/rope

Keeps distance between lines

Diameter ranging from 0 to 20mm

Solar Panels (LX-SP)

Convert the sun light/solar irradiance) directly into electricity to supply the electric fence energiser in areas hard to access of Mains power they are now the practical and cost effective efficient low maintenance method

1. Mono & polycrystalline
2. Max. Power(Pm)10W/20W/30W/40W/60W
3. Operating Voltage(V_{opm}): 12 to 18V
4. Module Operating Temperature: -45°C ~ +85°C
5. Performance Tolerance: ±5%

high voltage lightning arrester

(Item:HYHSW-17)

Installing on the terminal post, and minimising the damage to electric fence energiser from the thunder and lightning

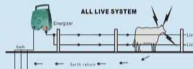
1. Must connect to the grounding system one side
2. Install on each energiser with 1 arrester

Solar controller(LX-SC)

The product can automatically manage the work of Solar Panel and battery in Solar System

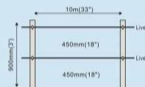
Typical solutions:

- If the conductivity of ground is not good because of dry soil or sand, the pulse circuit will not form even when animal touches the wire.
- Then we make adjustment of fixing the earth wire to bars also. By doing so, the system could work as efficiently as it does in common cases. Besides, the line design will vary greatly due to animal height, weight, and trait difference, please check below typical line design for different animals.

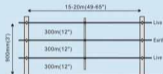


Ground connection

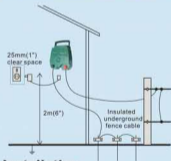
Stick two steel bars into ground, make sure the length between two bars is more than 30 cm, then connect the black grounding icon with one bar and connect the red pulse icon with the other. Put on the power and choose the 1.5 second mode. If the right number is less than 4 kv, the ground connection is good.



Solution for horse and cow:



Sticker bar is necessary if the length between two adjacent bar is around 15-20 ms.

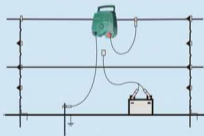


Installation

Indoor installation:

- 1) A appropriate place for fixing the energizer;
- 2) Out of touch of children and animals
- 3) Link the black grounding icon with clip to ground;
- 4) Link the red pulse output icon with clip to wire;
- 5) Connect with transformer and choose the mode;

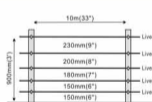
Notice: the power adapter could replace the Battery to provide power to energizer, if the customer do not have special requirement.



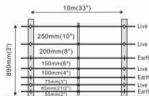
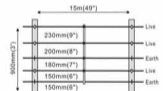
Outdoor installation:

- 1) In most cases, the energizer should be fixed on the wooden bar
- 2) Link the black grounding icon with clip to ground;
- 3) Link the red pulse output icon with clip to wire;
- 4) Connect with transformer and choose the mode;

Notice: the energizer could be powered by lead-acid, 12V DC or solar panel



Solution for goat, poultry animals



Solution for fiercer animals:





LX-2010 intelligent prison/border high voltage fence

LX-2010 series perimeter protection high voltage fence system has been self-developed and manufactured with more than 10 years' design experience and practical application cases in spot, which is a high technology digitization products and in conformity with GB25287-2010, Perimeter Protection High Voltage Device, by The People's Republic of China, and passes strict test and obtains the Test report by the Ministry of Public Security of P.R. China

Technical specification:

1. Output high voltage range: 3000V-6000V
2. Input power range: 180VAC-240VAC 50HZ
3. Normal state period: 1S
4. Attacking state period: 3S
5. Maximum shocking current: <math>< 500\text{mA}</math>
6. Minimum detecting current: $\geq 40\text{mA}$
7. Intensity of shock: 30mC-60mC
8. Alarm type: Wire break/short/touching fence/ tamper /communication failure



System features:

1. Conform to GB25287-2010 Perimeter Protection High Voltage Device
2. Bi-polar high voltage technology:
High voltage between any fencing wire and grounding.
Bi-polar high voltage between adjacent fence wires (two times voltage than wire to grounding)
3. Alarm records query :Look up 100 history alarm records (Alarm date, zone and type)
4. Multi-control function: 1 computer and 4 keypads
5. Zone expanding ability: Control 1-32 zones directly, and has no 'zones' limited when in LAN control solution
5. Timing arm/disarm: Arm, disarm, high/low voltage switch for 24 hours per day
6. Communicate : using Rs485 protocol for long distance control
7. Integration: DC12V and NO/NC output port, can be integrated with siren, warning lamp and other security devices.
8. Computer software operation.

Field of application:

Detention houses
Prisons
Weapons and
Ammunition depots
Military bases, etc.

